



THE UNIVERSITY
of ADELAIDE

Shaun Fernando

Harrison Boyce

Supervised by Professor Derek Abbott

Collaborator: Colleen Fitzpatrick

FORENSIC ENGINEERING SCIENCE: DEVELOPING TOOLS FOR HUMAN IDENTIFICATION

PROJECT ID: 2022S1-EEE-UG-13223

adelaide.edu.au

Introduction

Overview

- ◆ **Project Motivation and Aim**
- ◆ **Background**
- ◆ **Objectives**
- ◆ **Literature review**
- ◆ **Progress**
- ◆ **Results**
- ◆ **Completion Plan**
- ◆ **Conclusion**
- ◆ **References**

Project Motivation and Aims

- DNA is only viable when the deceased is in a database.
- To better the use of genealogical information for identification of remains

ISSUES WITH THE SYSTEM NOW

- Genealogical Data Communication (GEDCOM) files are not user friendly
- Need a visual medium

```
0 HEAD
1 SOUR FTM
2 VERS Family Tree Maker (21.0.0.388)
2 NAME Family Tree Maker for Windows
2 CORP Ancestry.com
3 ADDR 360 W 4800 N
4 CONT Provo, UT 84604
3 PHON (801) 705-7000
1 DEST GED55
1 DATE 18 FEB 2018
1 CHAR ANSI
1 FILE C:\Users\Colleen\Desktop\Chandler DNA\Gedcoms\February 17, 2018\Alderson
1 SUBM @SUBM@
1 GEDC
2 VERS 5.5
2 FORM LINEAGE-LINKED
0 @SUBM@ SUBM@
0 @I1@ INDI
1 NAME Doe /Chandler/ III
1 SEX U
1 BIRT
2 DATE ABT 1935
2 PLAC estim based on age at death
1 DEAT
2 DATE 23 JUL 2002
2 PLAC Eastlake, Cayuga Co, OH
1 OBJE @M1@
1 FAMC @F2515@
0 @I2@ INDI
1 NAME new tether /2/
1 SEX F
1 FAM5 @F2515@
0 @I5242@ INDI
1 NAME "tmbc" Tammy /Bachman/ DNAtester-13
1 SEX F
1 BIRT
2 DATE ABT 1970
2 PLAC per fa blrth
1 OBJE @M1339@
1 FAM5 @F1384@
0 @I389@ INDI
```

The beginning of a GEDCOM file

◆ **Background**

Genealogical Science Cases

- ◆ Northwest Flight 4422 crash in Alaska 1948
- ◆ The Canal Killer
- ◆ Golden State Killer

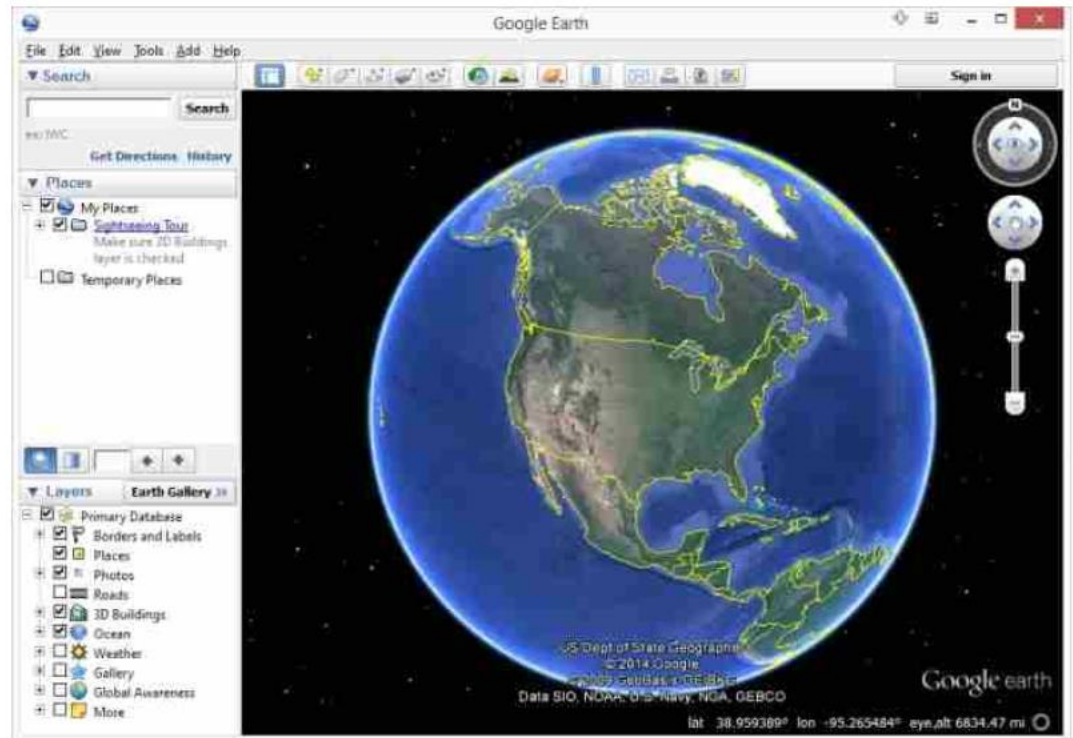
Objectives

- ♦ **Objective 1**
 - ♦ GEDCOM to .csv converter
- ♦ **Objective 2**
 - ♦ Get coordinates from location name
- ♦ **Objective 3**
 - ♦ KML file creation from .csv
- ♦ **Objective 4**
 - ♦ Display of information in visual medium

Literature Review

- ◆ **Literature Review**
 - ◆ **Existing Technologies**

- ◆ GEDCOM to .csv converters
- ◆ EarthPoint



An empty map on EarthPoint

- ◆ **Literature Review**
 - ◆ **DNA and genealogy**

Types of information in DNA

- ◆ Y-chromosomal DNA
- ◆ Mitochondrial DNA
- ◆ Autosomal DNA

Progress

Progress

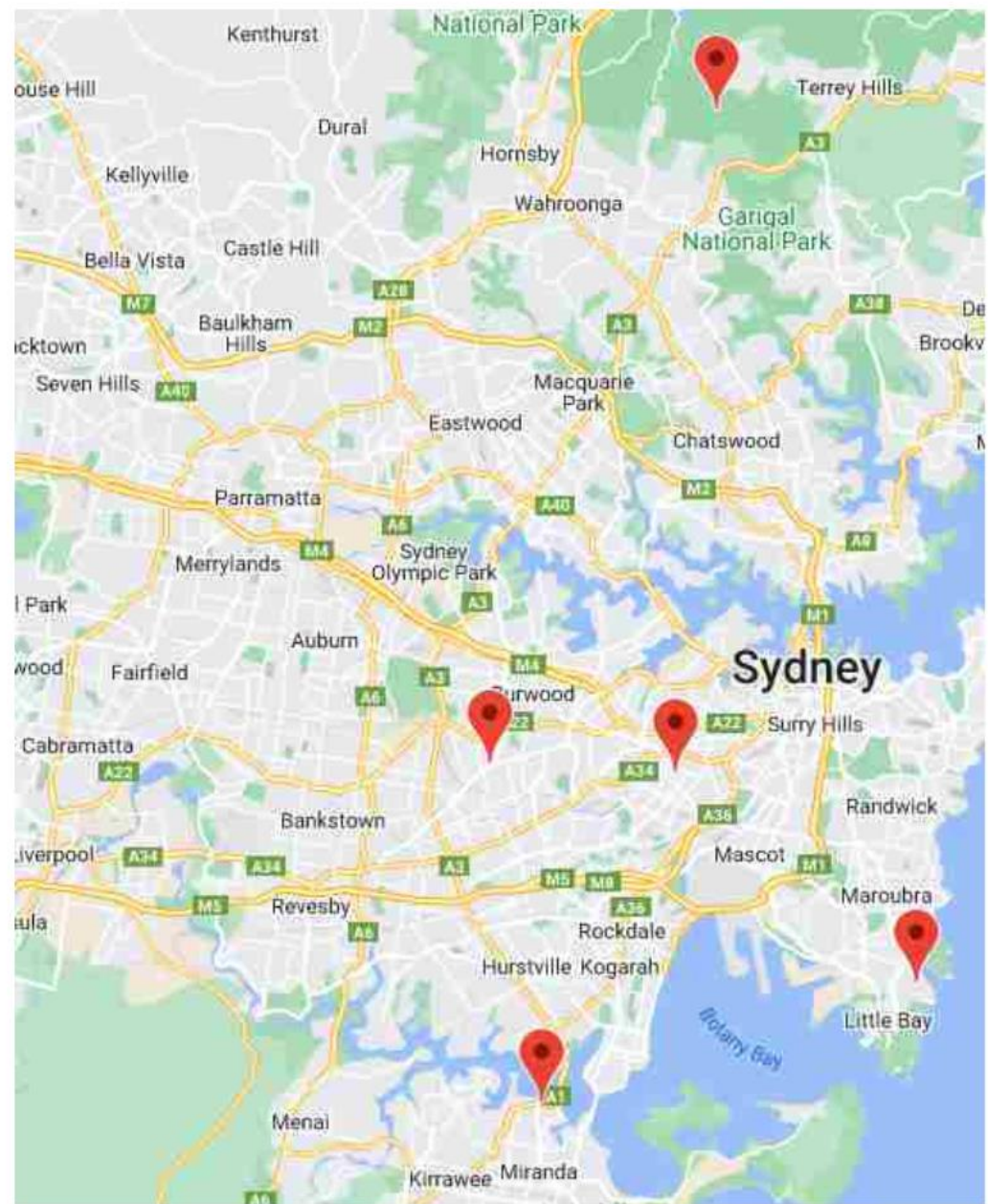
Progress

Results

- ◆ **Results**
- ◆ **Google Earth editor**



- ◆ **Results**
- ◆ **Google mymaps editor**



Completion Plan

Completion Plan

Objective 1- GEDCOM to Comma-Separated Values (CSV) file Parser

- ♦ Week 2 – finish making parser
- ♦ Week 4- finish testing for the parser

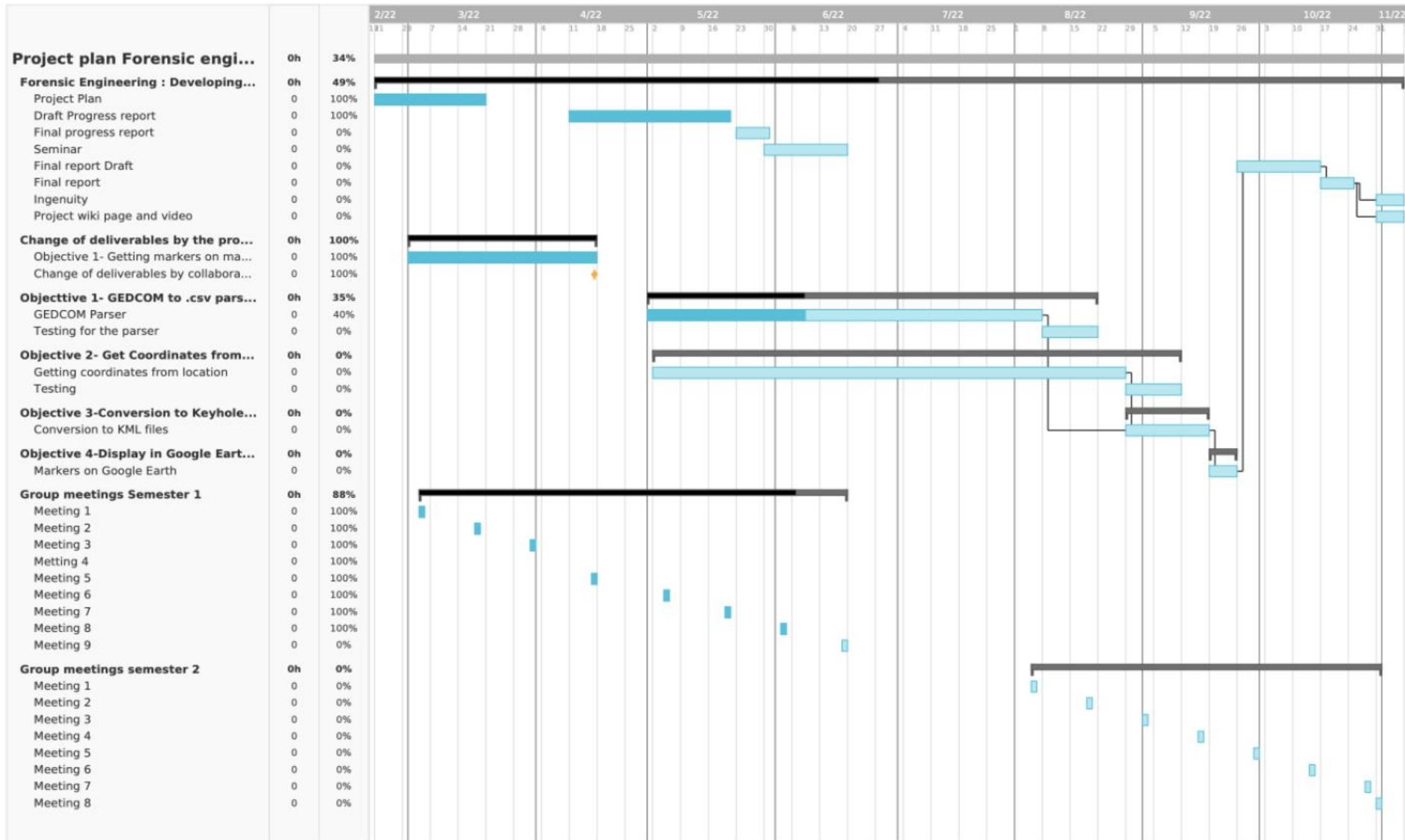
Objective 1

Completion Plan

Objective 3 and 4- Conversion to Keyhole Markup Language (KML) and Display in Google Earth

- ♦ Week 8 – finish both objectives

Completion Plan (Gantt Chart summary)



Conclusion

Conclusion

- ◆ Finishing whole program
- ◆ Future work

References

References

- **E. Greytak, C. Moore and S. Armentrout, "Genetic genealogy for cold case and active investigations", *Forensic Science International*, vol. 299, pp. 103-113, 2019. Available: [10.1016/j.forsciint.2019.03.039](https://doi.org/10.1016/j.forsciint.2019.03.039).**

*Thank
you*



Any Questions?



THE UNIVERSITY
of ADELAIDE

CRICOS PROVIDER NUMBER 00123M